

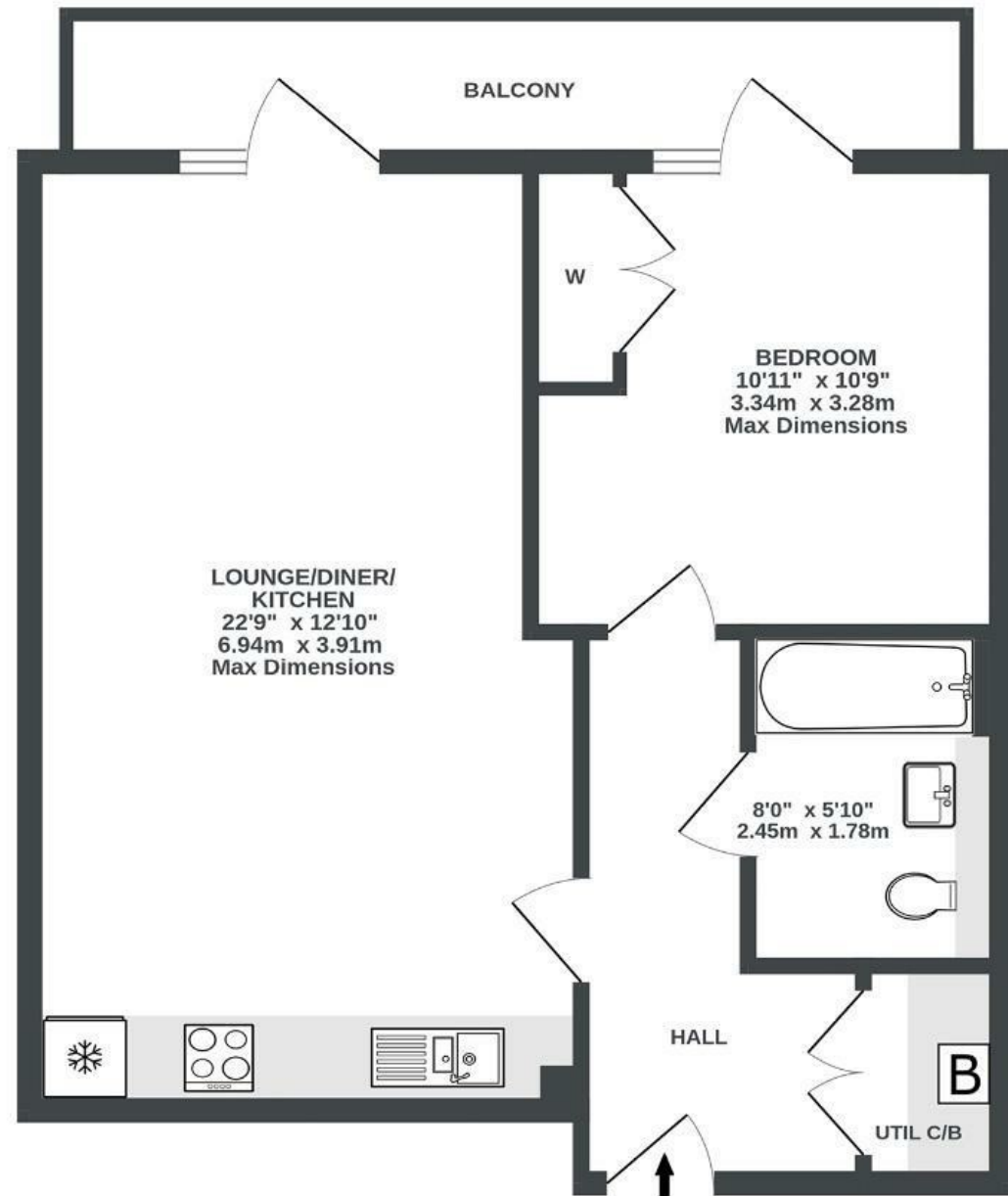
Stonemasons Yard

SPIKE ISLAND

APPROXIMATE FLOOR AREA
52 SQM / 560 SQFT



THIRD FLOOR
560 sq.ft. (52.0 sq.m.) approx.



Illustrations are for reference purposes only, measurements are approximate, not to scale.

Boardwalk

2 Gas Ferry Road , BRISTOL



£300,000



1 Bedrooms



BS1 6AS



1 Bathrooms

“Waking up to sun streaming through the balcony door, looking out at the river and contemplating which cafe to visit. Sipping on an evening drink and watching passers-by on the chocolate path. Quiz night at the Orchard Inn. A Harbourside run or even a swim if you're brave. These are just a few of the many things we have loved about living here.”

